

---

# 投資信託の主要統計

## Factbook of Japanese Investment Trusts

一般社団法人投資信託協会  
The Investment Trusts Association, Japan  
2018年1月  
January 2018

# 目 次

## I. 投資信託市場動向 Trend of Japanese Investment Trusts

1. 投資信託の全体像  
Total Net Assets-Structure of Investment Trusts
2. 公募投信の純資産総額等の推移  
Total Net Assets of Publicly Offered Investment Trusts
3. 公募株式投信の純資産総額等の推移  
Total Net Assets of Publicly Offered Stock Investment Trusts
4. 公募株式投信(除くETF)の純資産総額等の推移  
Total Net Assets of Publicly Offered Stock Investment Trusts (Excluding ETFs)
5. 契約型公募投信の新規設定・償還・運用中ファンドの本数  
Number of Newly Launched Funds, Redeemed Funds and Currently-Managed Funds / Publicly Offered Investment Trusts
6. 株式投信の商品分類別内訳  
The Figures of Publicly Offered Stock Investment Trusts by Investment Objectives
7. 1ファンドあたり平均運用資産残高  
Average Net Assets per Fund
8. 毎月決算型ファンドの純資産総額と株式投信に占める割合  
Total Net Assets of Monthly Payout Funds and Percentage of Monthly Payout Funds in Publicly Offered Stock Investment Trusts
9. 公募株式投信に占める外貨建純資産比率の推移  
Percentage of Foreign Currency-Denominated Assets in Publicly Offered Investment Trusts and Publicly Offered Stock Investment Trusts
10. 公募株式投信における国内株式への投資比率  
Percentage of Domestic Shares in Publicly Offered Stock Investment Trusts
11. 公募株式投信の販売態別純資産残高とシェア  
Total Net Assets and Share of Publicly Offered Stock Investment Trusts by Distribution Channels
12. ETFの純資産総額と本数  
The Number and Total Net Assets of ETFs
13. 公募株式投信(追加型)における運用管理費用(信託報酬)の状況  
Fees and Expenses of Publicly Offered Stock Investment Trusts (Trust Remunerations)
14. 公募株式投信(追加型)における販売手数料の状況  
Fees and Expenses of Publicly Offered Stock Investment Trusts (Sales Charges)
15. 公募株式投信(除くETF)の平均保有期間の推移  
Average holding period of Publicly Offered Stock Investment Trusts (Excluding ETFs)
16. 上場REITの純資産総額  
Total Net Assets of Listed REITs
17. 確定拠出年金(DC)向けファンドの市場規模(推計)  
Total Net Assets of Investment Trusts For Defined Contribution Pension Plan
18. ラップ向けファンドの市場規模(推計)  
Total Net Assets of Investment Trusts For Wrap Account
19. 契約型私募投信の純資産総額の推移  
Total Net Assets of Privately Placed Investment Trusts
20. 主要国における個人金融資産構成の比率  
Ratio of Individual Financial Assets Structure in the Major Countries
21. 投資信託の世界統計  
World Statistics of Investment Funds

## II. 業界の概況 Outline of Industry

22. 協会会員数等の推移  
The Number of Member Companies of JITA

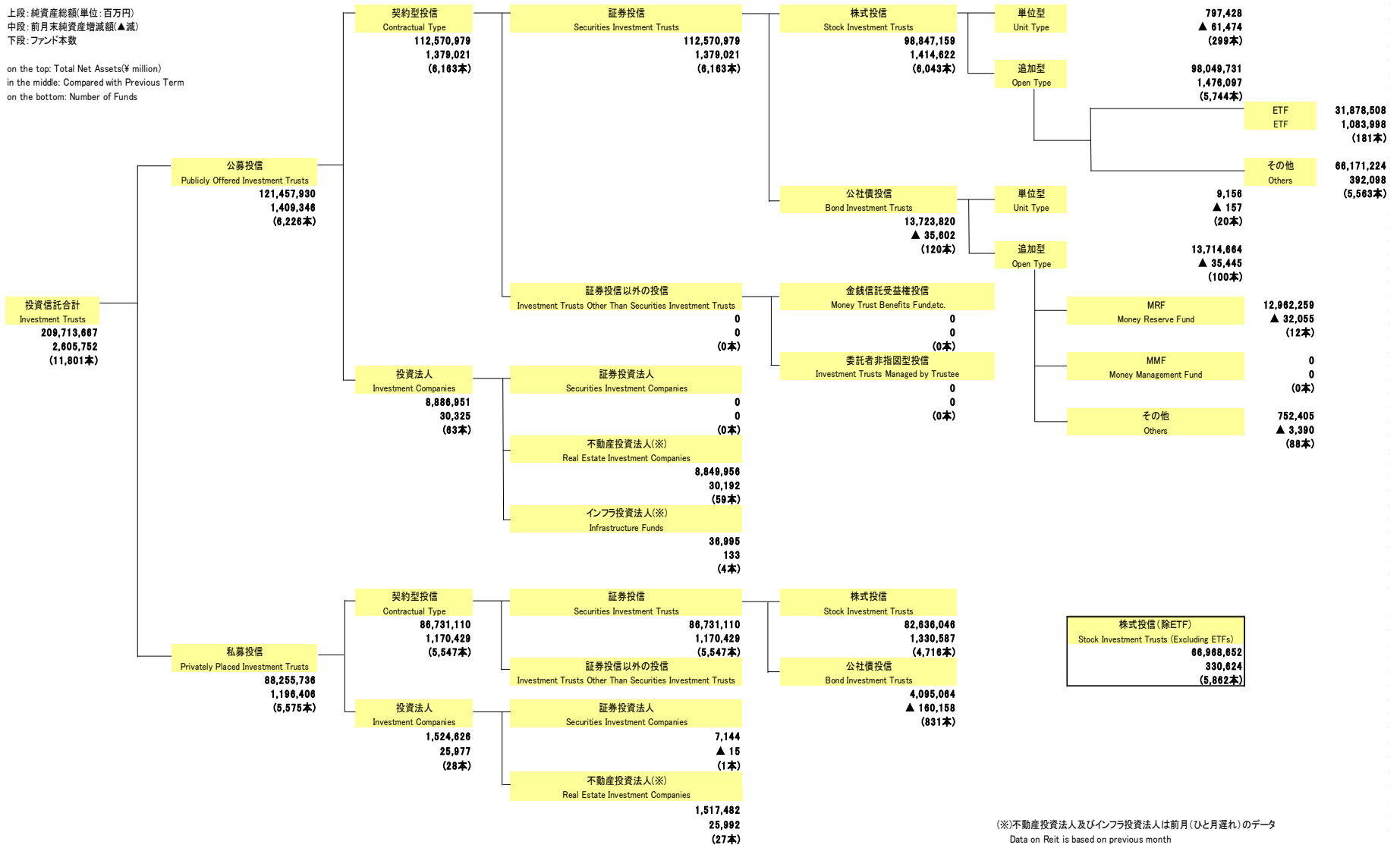
# 1. 投資信託の全体像

## Total Net Assets-Structure of Investment Trusts

2018年1月末(Table End of January 2018)

上段:純資産総額(単位:百万円)  
中段:前月末純資産増減額(▲減)  
下段:ファンド本数

on the top: Total Net Assets(¥ million)  
in the middle: Compared with Previous Term  
on the bottom: Number of Funds



(※)不動産投資法人及びインフラ投資法人は前月(ひと月遅れ)のデータ  
Data on Reit is based on previous month  
Data on infrastructure funds is based on previous month

## 2. 公募投信の純資産総額等の推移 Total Net Assets of Publicly Offered Investment Trusts

兆円 Trillion Yen

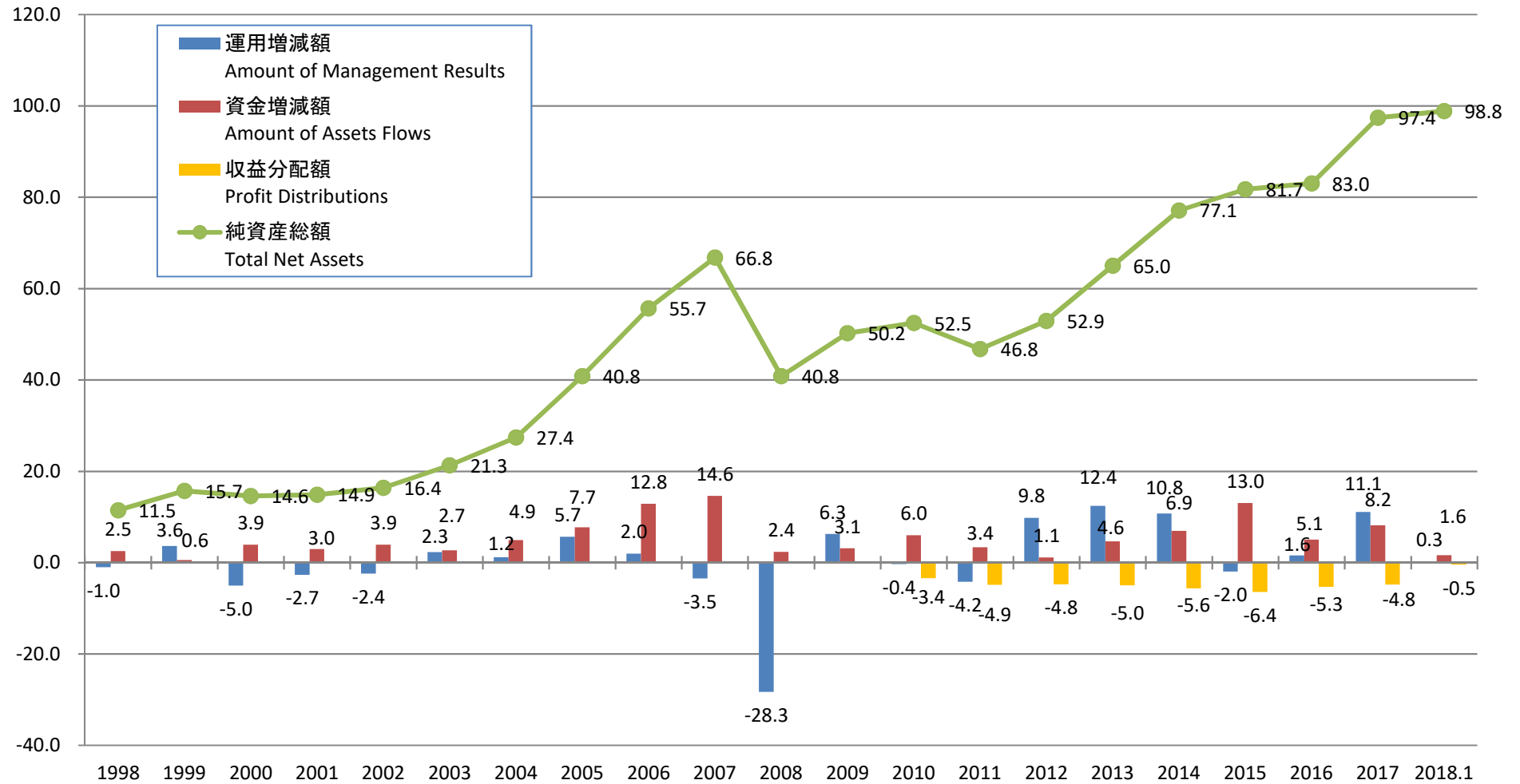


2018年以外 各年12月末 End of December in Every Year , Except for 2018

### 3. 公募株式投信の純資産総額等の推移

Total Net Assets of Publicly Offered Stock Investment Trusts

兆円 Trillion Yen

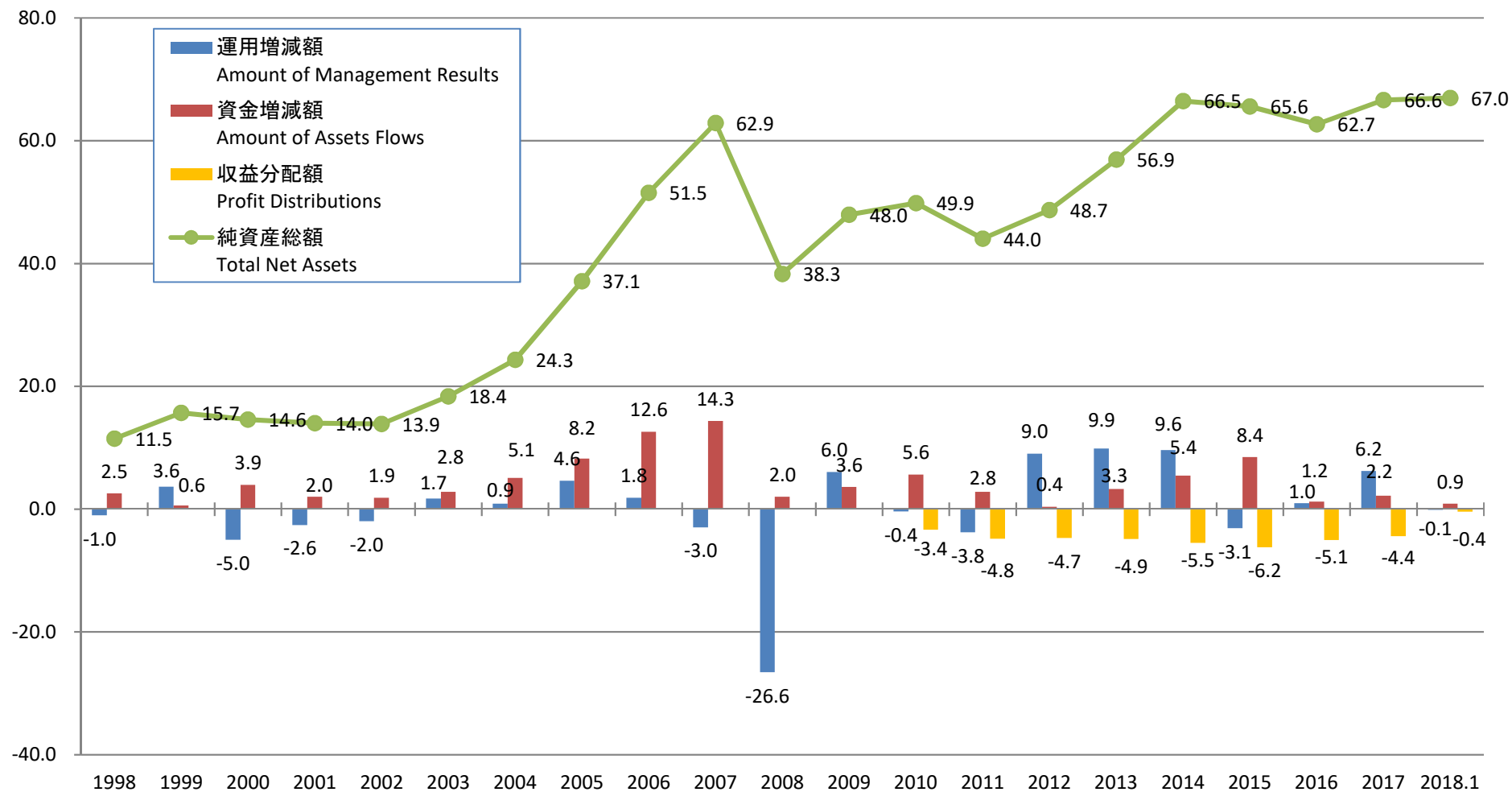


2018年以外 各年12月末 End of December in Every Year , Except for 2018

## 4. 公募株式投信(除くETF)の純資産総額等の推移

Total Net Assets of Publicly Offered Stock Investment Trusts (Excluding ETFs)

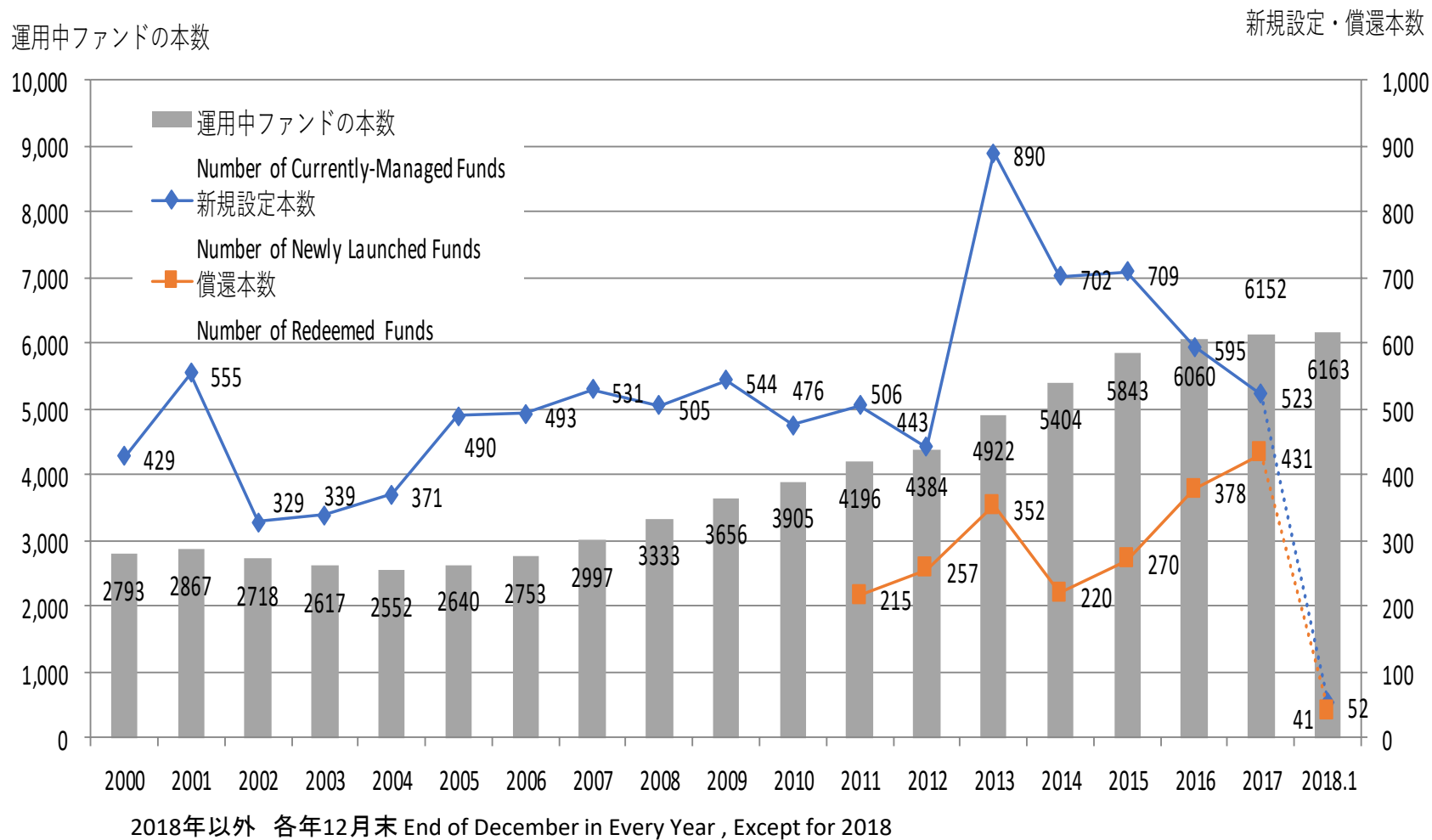
兆円 Trillion Yen



2018年以外 各年12月末 End of December in Every Year , Except for 2018

## 5. 契約型公募投信の新規設定・償還・運用中ファンドの本数

Number of Newly Launched Funds, Redeemed Funds and Currently-Managed Funds / Publicly Offered Investment Trusts



## 6. 株式投信の商品分類別内訳

### The Figures of Publicly Offered Stock Investment Trusts by Investment Objectives

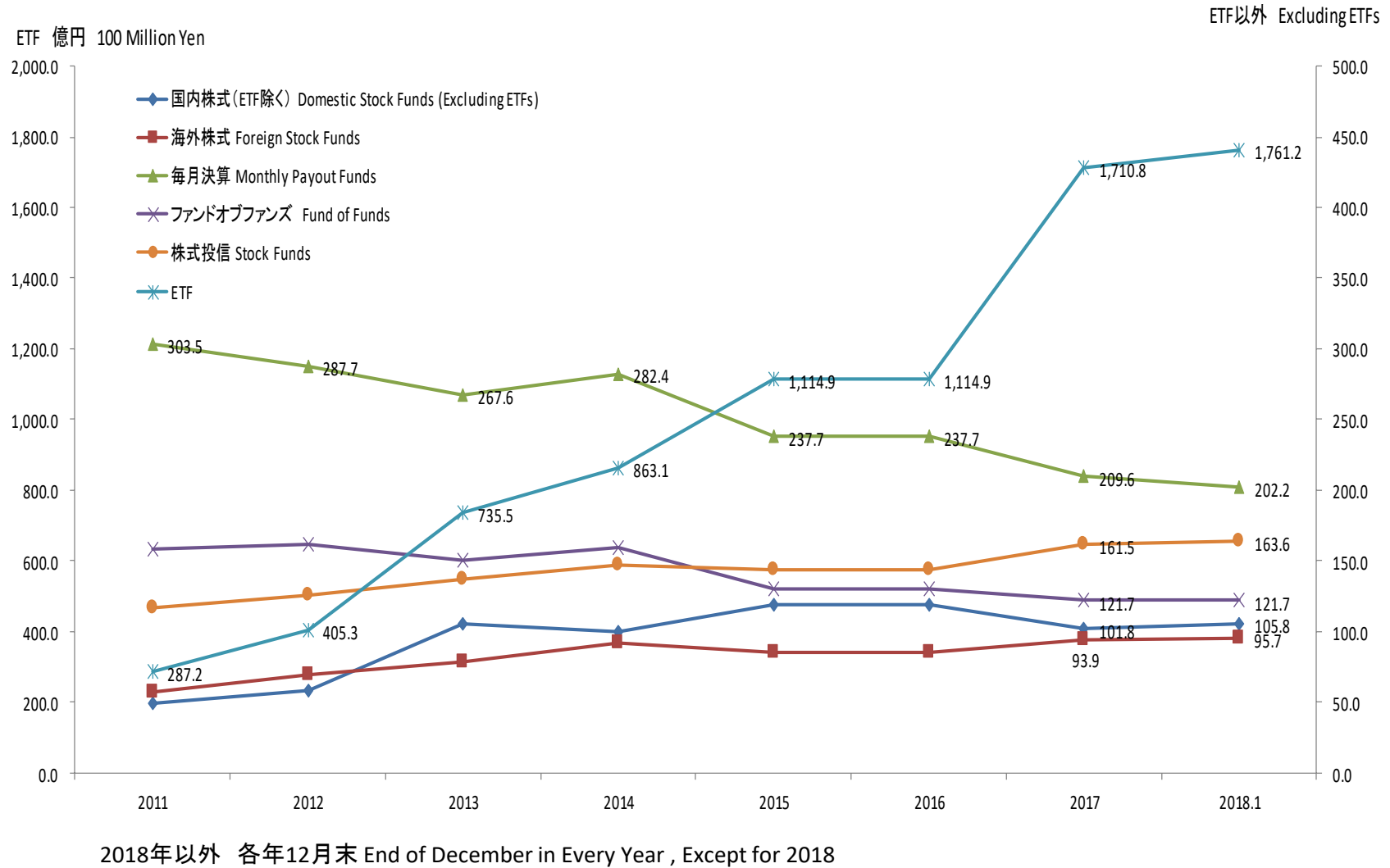
2018年1月末(Table End of January 2018)

(単位：億円； ¥ 100 million)

| 項目 ITEMS   |                                     | 設定額<br>Sales<br>(A) | 解約額<br>Repurchases<br>(B) | 解約率<br>Rate of<br>Repurchases<br>(C) | 償還額<br>Redemptions<br>(C) | 資金増減(▲)額<br>(D) =<br>(A) - (B) + (C) | 運用増減(▲)額<br>Managed Results<br>(E) | 収益分配額<br>Profit Distributions<br>(F) | 純資産増減(▲)額<br>( (D) + (E) - (F) ) | 増減率<br>Rate of Change | 純資産総額<br>Total Net Assets | ファンド本数<br>Number of<br>Funds |
|--|-------------------------------------|---------------------|---------------------------|--------------------------------------|---------------------------|--------------------------------------|------------------------------------|--------------------------------------|----------------------------------|-----------------------|---------------------------|------------------------------|
| 地域 Area  | 資産 Assets                           |                     |                           |                                      |                           |                                      |                                    |                                      |                                  |                       |                           |                              |
| 国内 Domestic  | 株式 Stock                            | 18,448              | 9,261                     | 2.3                                  | 118                       | 9,069                                | 5,190                              | 798                                  | 13,460                           | 3.4                   | 408,923                   | 1,033                        |
|  | 債券 Bond                             | 1,201               | 1,322                     | 4.6                                  | 0                         | ▲120                                 | ▲54                                | 13                                   | ▲187                             | ▲0.6                  | 28,792                    | 222                          |
|  | 不動産投信 Real Estate Investment Trusts | 1,124               | 926                       | 2.7                                  | 0                         | 198                                  | 1,698                              | 297                                  | 1,599                            | 4.7                   | 35,918                    | 125                          |
|  | その他資産 Other Assets                  | 8                   | 10                        | 7.0                                  | 0                         | ▲2                                   | 0                                  | 0                                    | ▲2                               | ▲1.3                  | 139                       | 4                            |
|  | 資産複合 Asset Mix                      | 139                 | 213                       | 3.6                                  | 0                         | ▲74                                  | 37                                 | 14                                   | ▲50                              | ▲0.9                  | 5,845                     | 70                           |
|  |                                     |                     | 20,921                    | 11,732                               | 2.5                       | 118                                  | 9,072                              | 6,871                                | 1,122                            | 14,820                | 3.2                       | 479,618                      |
| 海外 Foreign   | 株式 Stock                            | 4,142               | 2,482                     | 3.1                                  | 1                         | 1,660                                | 1,524                              | 412                                  | 2,772                            | 3.5                   | 82,202                    | 859                          |
|  | 債券 Bond                             | 2,267               | 2,923                     | 2.3                                  | 10                        | ▲666                                 | ▲1,774                             | 809                                  | ▲3,249                           | ▲2.5                  | 125,882                   | 1,253                        |
|  | 不動産投信 Real Estate Investment Trusts | 779                 | 1,795                     | 3.6                                  | 0                         | ▲1,017                               | ▲3,587                             | 632                                  | ▲5,236                           | ▲10.6                 | 44,338                    | 226                          |
|  | その他資産 Other Assets                  | 96                  | 376                       | 4.7                                  | 6                         | ▲285                                 | 20                                 | 34                                   | ▲300                             | ▲3.7                  | 7,751                     | 191                          |
|  | 資産複合 Asset Mix                      | 417                 | 730                       | 3.9                                  | 0                         | ▲313                                 | ▲315                               | 184                                  | ▲813                             | ▲4.3                  | 18,131                    | 192                          |
|  |                                     |                     | 7,701                     | 8,306                                | 2.9                       | 16                                   | ▲621                               | ▲4,132                               | 2,072                            | ▲6,825                | ▲2.4                      | 278,305                      |
| 内外 InterNational                                       | 株式 Stock                            | 8,905               | 2,375                     | 3.1                                  | 0                         | 6,530                                | 1,556                              | 739                                  | 7,346                            | 9.7                   | 82,925                    | 361                          |
|  | 債券 Bond                             | 1,132               | 746                       | 1.9                                  | 249                       | 138                                  | ▲545                               | 93                                   | ▲500                             | ▲1.3                  | 37,857                    | 349                          |
|  | 不動産投信 Real Estate Investment Trusts | 208                 | 484                       | 2.7                                  | 0                         | ▲275                                 | ▲1,097                             | 251                                  | ▲1,623                           | ▲9.0                  | 16,361                    | 91                           |
|  | その他資産 Other Assets                  | 123                 | 204                       | 2.7                                  | 359                       | ▲441                                 | ▲15                                | 30                                   | ▲485                             | ▲6.5                  | 7,000                     | 151                          |
|  | 資産複合 Asset Mix                      | 3,245               | 1,604                     | 1.9                                  | 22                        | 1,619                                | ▲6                                 | 200                                  | 1,412                            | 1.7                   | 86,405                    | 916                          |
|  |                                     |                     | 13,613                    | 5,413                                | 2.4                       | 630                                  | 7,570                              | ▲107                                 | 1,312                            | 6,151                 | 2.7                       | 230,548                      |
| 株式投信合計 Stock Investment Trusts                         |                                     | 42,236              | 25,451                    | 2.6                                  | 765                       | 16,021                               | 2,632                              | 4,507                                | 14,146                           | 1.5                   | 988,472                   | 6,043                        |
| 株式投信(除くETF)合計 Stock Investment Trusts (Excluding ETFs) |                                     | 29,666              | 20,165                    | 3.0                                  | 765                       | 8,736                                | ▲1,212                             | 4,218                                | 3,306                            | 0.5                   | 669,687                   | 5,862                        |
| インデックス Index   | 日経225 NIKKEI225                     | 5,542               | 3,437                     | 2.4                                  | 0                         | 2,105                                | 1,996                              | 111                                  | 3,990                            | 2.8                   | 145,203                   | 90                           |
|  | TOPIX TOPIX                         | 5,204               | 1,036                     | 0.7                                  | 0                         | 4,168                                | 1,537                              | 87                                   | 5,617                            | 3.6                   | 161,531                   | 80                           |
|  | その他 Others                          | 5,911               | 3,685                     | 3.8                                  | 0                         | 2,226                                | 663                                | 224                                  | 2,665                            | 2.7                   | 100,589                   | 741                          |
|  |                                     | 16,657              | 8,158                     | 2.1                                  | 0                         | 8,498                                | 4,196                              | 423                                  | 12,272                           | 3.1                   | 407,323                   | 911                          |
| ETF ETF  |                                     | 12,570              | 5,285                     | 1.7                                  | 0                         | 7,285                                | 3,844                              | 289                                  | 10,840                           | 3.5                   | 318,785                   | 181                          |
| 毎月決算型 Monthly Payout                                   |                                     | 5,211               | 8,309                     | 2.7                                  | 23                        | ▲3,121                               | ▲5,266                             | 2,914                                | ▲11,301                          | ▲3.7                  | 294,973                   | 1,459                        |
| ファンドオブファンズ Fund of Funds                               |                                     | 9,628               | 6,968                     | 2.6                                  | 48                        | 2,613                                | ▲242                               | 1,822                                | 549                              | 0.2                   | 264,122                   | 2,170                        |
| 特殊型 Special Type                                       | ブル・ベア型 Bull/Bear                    | 1,101               | 906                       | 30.5                                 | 19                        | 176                                  | 6                                  | 0                                    | 182                              | 6.1                   | 3,156                     | 56                           |
|  | 条件付運用型 Conditional Management       | 0                   | 0                         | 0.0                                  | 0                         | 0                                    | 0                                  | 0                                    | 0                                | 0.1                   | 25                        | 3                            |
|  | ロング・ショート型 Long/Short                | 234                 | 160                       | 2.5                                  | 10                        | 63                                   | 77                                 | 1                                    | 139                              | 2.2                   | 6,618                     | 79                           |
|  | その他型 Others                         | 45                  | 21                        | 2.4                                  | 0                         | 24                                   | 17                                 | 17                                   | 24                               | 2.7                   | 926                       | 22                           |
|  |                                     | 1,380               | 1,088                     | 10.5                                 | 29                        | 263                                  | 101                                | 19                                   | 346                              | 3.3                   | 10,725                    | 160                          |



# 7. 1ファンドあたり平均運用資産残高 Average Net Assets per Fund



## 8. 毎月決算型ファンドの純資産総額と株式投信に占める割合

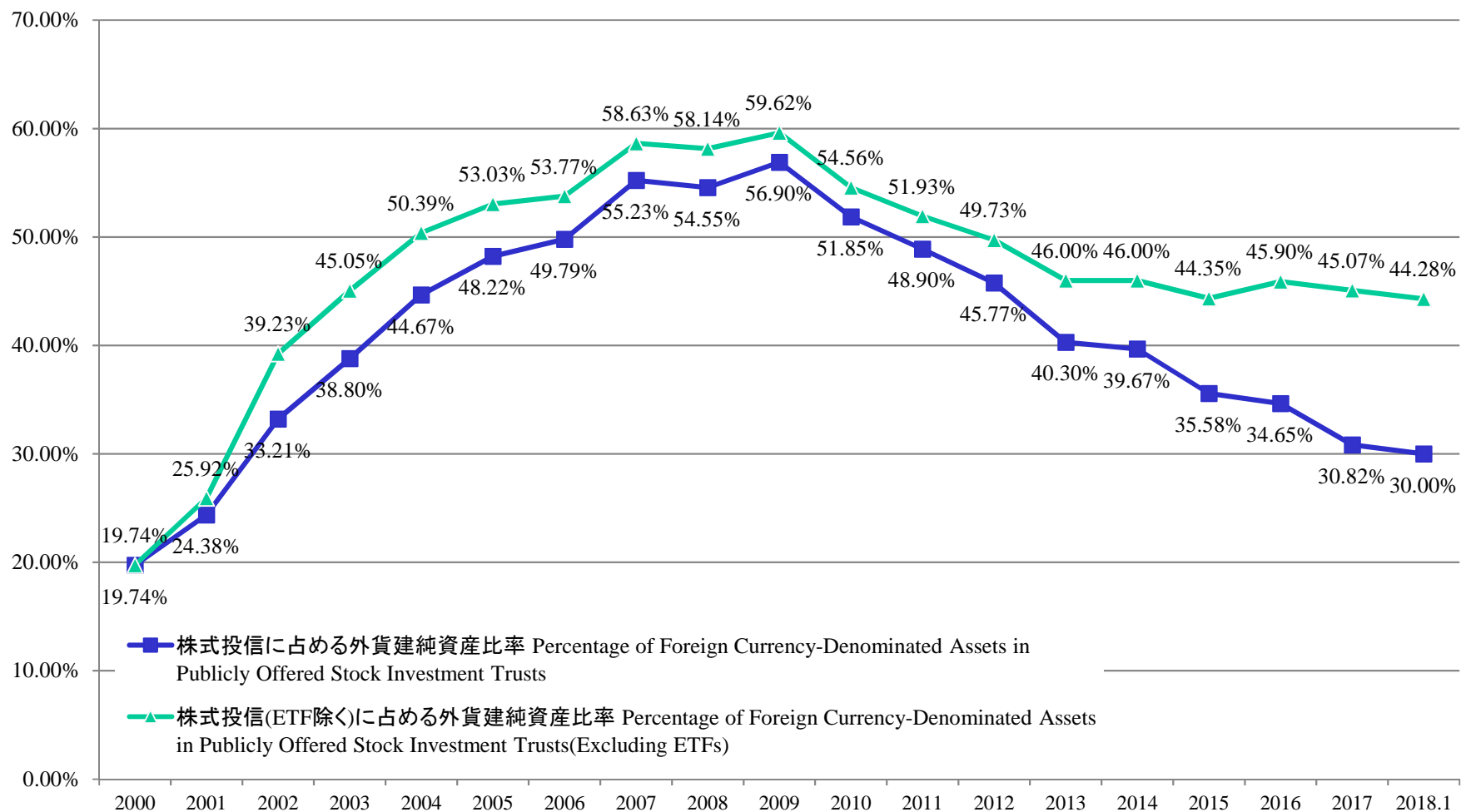
Total Net Assets of Monthly Payout Funds and Percentage of Monthly Payout Funds in Publicly Offered Stock Investment Trusts



2018年以外 各年12月末 End of December in Every Year , Except for 2018

## 9. 公募株式投信に占める外貨建純資産比率の推移

Percentage of Foreign Currency-Denominated Assets in Publicly Offered Investment Trusts and Publicly Offered Stock Investment Trusts



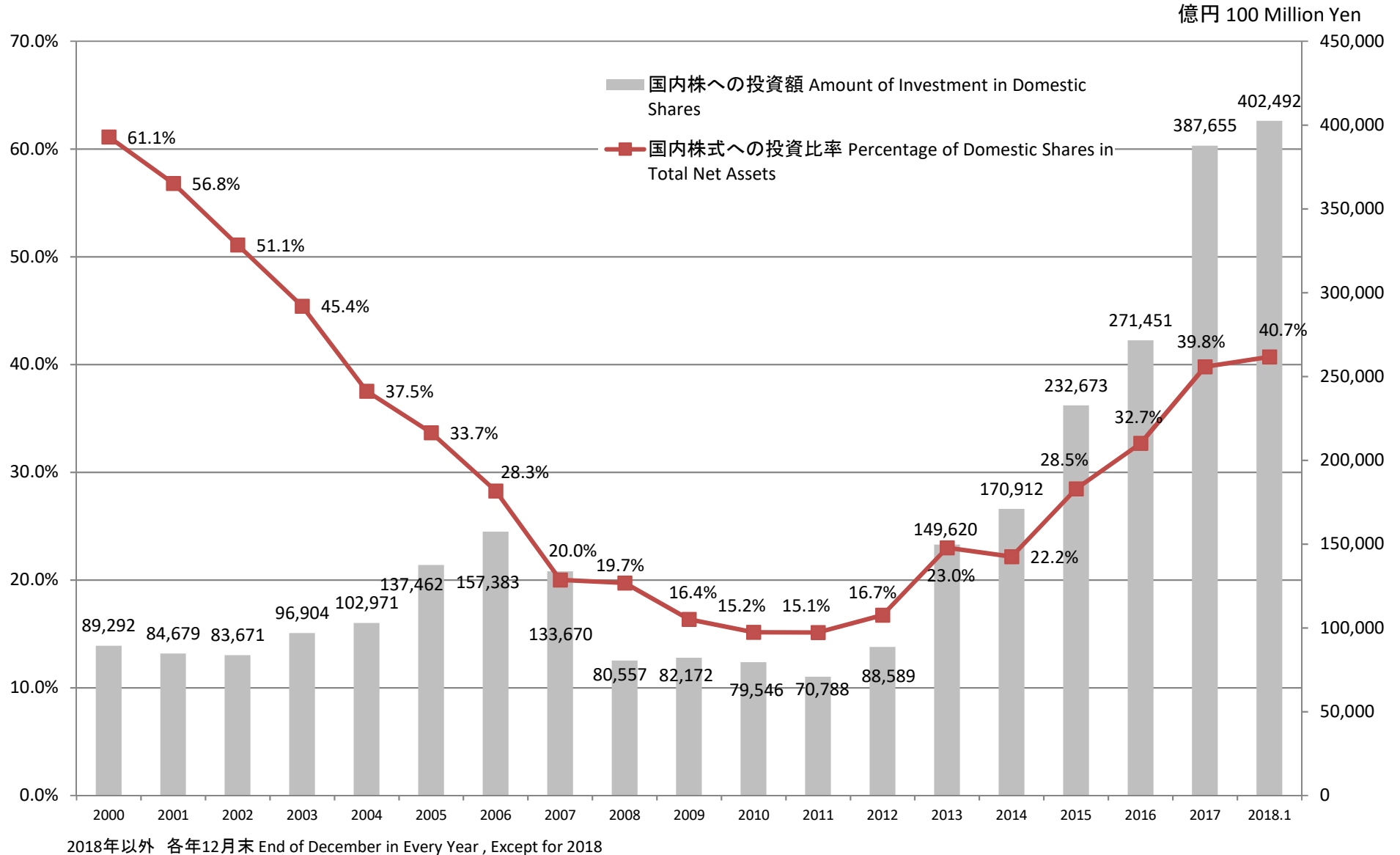
2018年以外 各年12月末 End of December in Every Year , Except for 2018

(\*) 外貨建純資産に円建て外国投資信託は含まれていない場合がある。

There are cases which Foreign Currency-Denominated Assets don't include Yen-denominated Off-Shore Funds Assets.

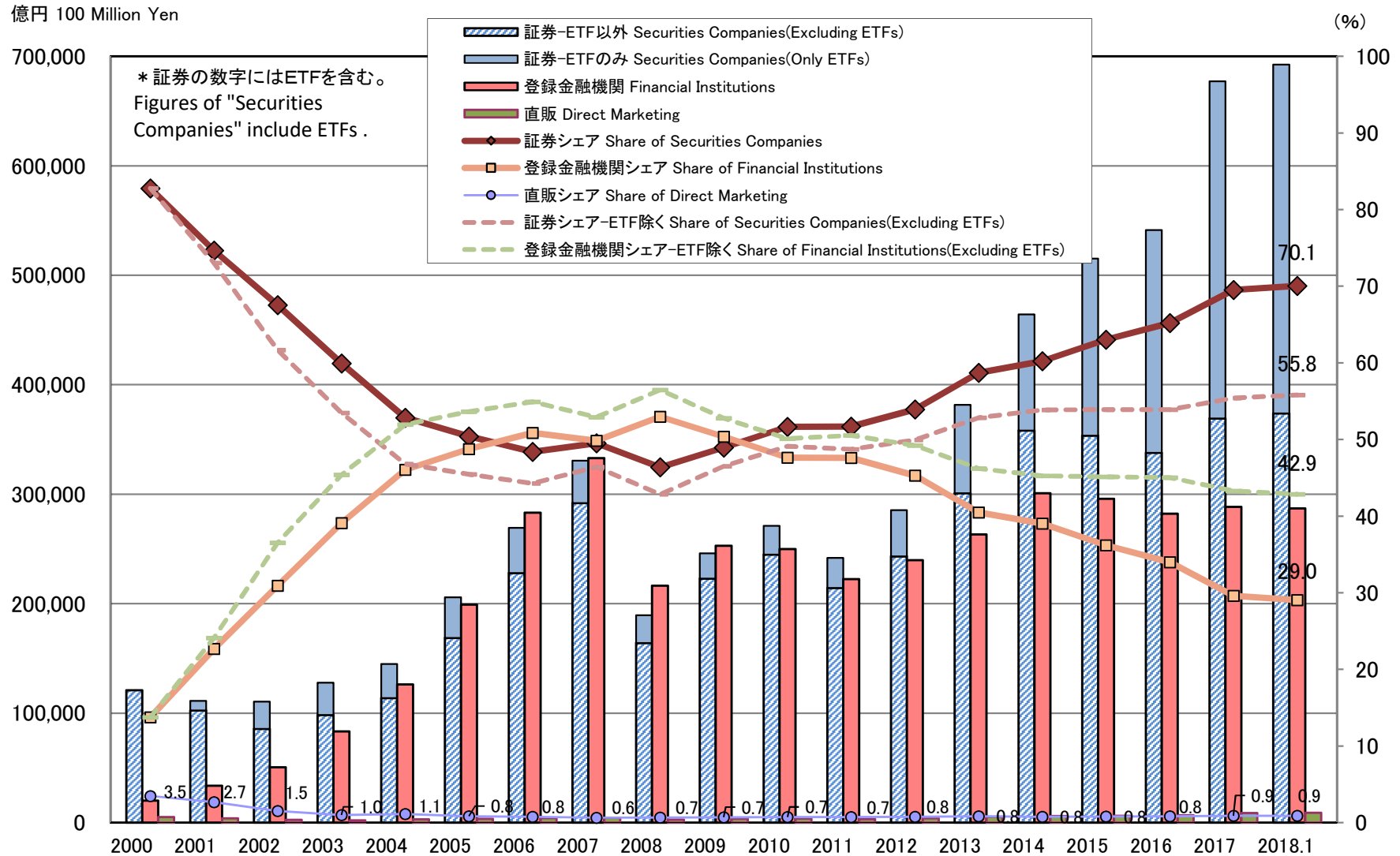
# 10. 公募株式投信における国内株式への投資比率の推移

## Percentage of Domestic Shares in Publicly Offered Stock Investment Trusts



# 11. 公募株式投信の販売態別純資産残高とシェア

## Total Net Assets and Share of Publicly Offered Stock Investment Trusts by Distribution Channels

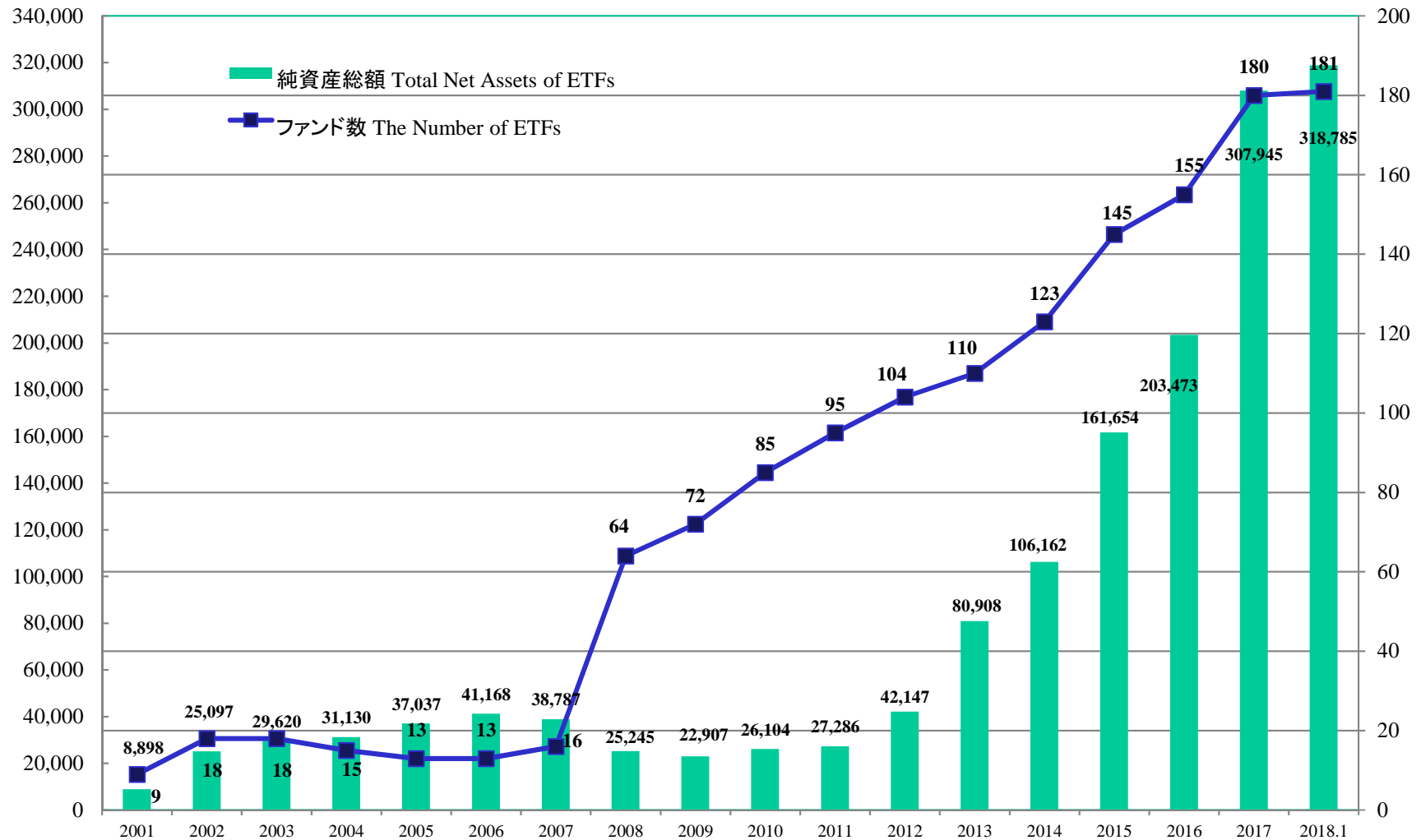


2018年以外 各年12月末 End of December in Every Year , Except for 2018

## 12. ETFの純資産総額と本数 The Number and Total Net Assets of ETFs

億円 100 Million Yen

本数 The Number of ETFs



2018年以外 各年12月末 End of December in Every Year , Except for 2018

# 13. 公募株式投信(追加型)における運用管理費用(信託報酬)の状況 Fees and Expenses of Publicly Offered Stock Investment Trusts (Trust Remunerations)

2018年1月末(Table End of January 2018)

(単位:% (税抜Excluding tax))

| 地域 Area                             | 項目 ITEMS                            | 運用管理費用<br>Trust Remuneration<br>(A+B+C) |               |               | 委託会社<br>Trust Remuneration for The Trustor<br>(A) |               |               | 販売会社<br>Agent Fee<br>(B) |               |               | 受託会社<br>Trust Remuneration for The Trustee<br>(C) |               |               | ファンド本数<br>Number of Funds<br>(※) |
|-------------------------------------|-------------------------------------|---|---------------|---------------|---|---------------|---------------|--------------------------|---------------|---------------|---|---------------|---------------|----------------------------------|
|                                     |                                     | 平均<br>Average                           | 最大<br>Maximum | 最小<br>Minimum | 平均<br>Average                                     | 最大<br>Maximum | 最小<br>Minimum | 平均<br>Average            | 最大<br>Maximum | 最小<br>Minimum | 平均<br>Average                                     | 最大<br>Maximum | 最小<br>Minimum |                                  |
| 国内 Domestic                         | 株式 Stock                            | 1.05                                    | 2.15          | 0.06          | 0.52  | 1.60          | 0.05          | 0.47                     | 1.10          | 0.00          | 0.06  | 0.15          | 0.02          | 914                              |
|                                     | 債券 Bond                             | 0.35                                    | 1.00          | 0.05          | 0.17  | 0.47          | 0.02          | 0.15                     | 0.67          | 0.00          | 0.03  | 0.07          | 0.01          | 97                               |
|                                     | 不動産投信 Real Estate Investment Trusts | 0.70                                    | 1.35          | 0.16          | 0.33  | 0.69          | 0.01          | 0.33                     | 0.75          | 0.00          | 0.04  | 0.08          | 0.02          | 111                              |
|                                     | その他資産 Other Assets                  | 1.18                                    | 1.89          | 0.45          | 0.71  | 1.11          | 0.23          | 0.43                     | 0.75          | 0.00          | 0.04  | 0.05          | 0.03          | 4                                |
|                                     | 資産複合 Asset Mix                      | 0.93                                    | 1.70          | 0.15          | 0.42  | 0.75          | 0.09          | 0.46                     | 0.90          | 0.00          | 0.05  | 0.10          | 0.02          | 45                               |
|                                     |                                     | 0.95                                    | 2.15          | 0.05          | 0.47  | 1.60          | 0.01          | 0.43                     | 1.10          | 0.00          | 0.05  | 0.15          | 0.01          | 1,171                            |
| 海外 Foreign                          | 株式 Stock                            | 1.25                                    | 2.38          | 0.06          | 0.61  | 1.60          | 0.02          | 0.59                     | 1.12          | 0.00          | 0.05  | 0.10          | 0.02          | 816                              |
|                                     | 債券 Bond                             | 1.06                                    | 1.90          | 0.10          | 0.49  | 1.13          | 0.01          | 0.53                     | 0.90          | 0.00          | 0.04  | 0.10          | 0.02          | 1,099                            |
|                                     | 不動産投信 Real Estate Investment Trusts | 1.10                                    | 1.85          | 0.10          | 0.51  | 1.06          | 0.07          | 0.55                     | 1.08          | 0.00          | 0.05  | 0.10          | 0.02          | 205                              |
|                                     | その他資産 Other Assets                  | 1.15                                    | 1.89          | 0.24          | 0.57  | 1.09          | 0.10          | 0.54                     | 0.85          | 0.00          | 0.04  | 0.07          | 0.03          | 134                              |
|                                     | 資産複合 Asset Mix                      | 1.28                                    | 2.06          | 0.46          | 0.55  | 1.12          | 0.01          | 0.68                     | 1.00          | 0.01          | 0.04  | 0.10          | 0.02          | 190                              |
|                                     |                                     | 1.15                                    | 2.38          | 0.06          | 0.54  | 1.60          | 0.01          | 0.57                     | 1.12          | 0.00          | 0.04  | 0.10          | 0.02          | 2,444                            |
| 内外 InterNational                    | 株式 Stock                            | 1.28                                    | 2.20          | 0.08          | 0.59  | 1.30          | 0.01          | 0.64                     | 1.03          | 0.00          | 0.05  | 0.10          | 0.02          | 347                              |
|                                     | 債券 Bond                             | 1.00                                    | 1.80          | 0.11          | 0.46  | 1.02          | 0.05          | 0.50                     | 1.00          | 0.01          | 0.03  | 0.10          | 0.02          | 314                              |
|                                     | 不動産投信 Real Estate Investment Trusts | 1.16                                    | 1.59          | 0.23          | 0.62  | 1.00          | 0.10          | 0.49                     | 0.80          | 0.01          | 0.05  | 0.10          | 0.02          | 88                               |
|                                     | その他資産 Other Assets                  | 1.08                                    | 1.84          | 0.24          | 0.51  | 1.12          | 0.09          | 0.54                     | 0.80          | 0.00          | 0.03  | 0.10          | 0.02          | 91                               |
|                                     | 資産複合 Asset Mix                      | 1.00                                    | 2.05          | 0.10          | 0.44  | 1.15          | 0.01          | 0.51                     | 1.10          | 0.00          | 0.04  | 0.10          | 0.02          | 714                              |
|                                     |                                     | 1.08                                    | 2.20          | 0.08          | 0.49  | 1.30          | 0.01          | 0.54                     | 1.10          | 0.00          | 0.04  | 0.10          | 0.02          | 1,554                            |
| 株式投信(追加型)合計 Stock Investment Trusts |                                     | 1.08                                    | 2.38          | 0.05          | 0.51  | 1.60          | 0.01          | 0.53                     | 1.12          | 0.00          | 0.05  | 0.15          | 0.01          | 5,169                            |

※DC向けファンド、マネープール、財形、ミリオンを除外 Excluded funds for DC, money pool funds and employee's asset-building schemes.

※ファンド・オブ・ファンズの場合、交付目論見書における当該ファンドの料率で計算 In case of fund of funds, rate disclosed in the fund's summary prospectus is used.

|                              |      |      |      |      |      |      |      |      |      |      |      |      |       |
|------------------------------|------|------|------|------|------|------|------|------|------|------|------|------|-------|
| インデックス Index Funds           | 0.46 | 1.65 | 0.06 | 0.25 | 0.90 | 0.02 | 0.16 | 1.10 | 0.00 | 0.04 | 0.10 | 0.01 | 709   |
| うちETF ETF                    | 0.36 | 0.95 | 0.06 | 0.32 | 0.90 | 0.03 | 0.00 | 0.00 | 0.00 | 0.05 | 0.10 | 0.02 | 181   |
| アクティブ Actively Managed Funds | 1.18 | 2.38 | 0.05 | 0.55 | 1.60 | 0.01 | 0.59 | 1.12 | 0.00 | 0.05 | 0.15 | 0.02 | 4,460 |

|                      |      |      |      |      |      |      |      |      |      |      |      |      |       |
|----------------------|------|------|------|------|------|------|------|------|------|------|------|------|-------|
| 毎月決算型 Monthly Payout | 1.15 | 1.90 | 0.15 | 0.49 | 1.13 | 0.01 | 0.61 | 1.08 | 0.00 | 0.04 | 0.10 | 0.02 | 1,459 |
| 毎月決算型以外 Other        | 1.06 | 2.38 | 0.05 | 0.52 | 1.60 | 0.01 | 0.49 | 1.12 | 0.00 | 0.05 | 0.15 | 0.01 | 3,710 |

|  |      |      |      |      |      |      |      |      |      |      |      |      |     |
|--|------|------|------|------|------|------|------|------|------|------|------|------|-----|
| DC向けファンド Defined Contribution Pension Plan | 0.70 | 1.82 | 0.10 | 0.33 | 1.10 | 0.04 | 0.31 | 1.02 | 0.02 | 0.05 | 0.10 | 0.02 | 447 |
|--|------|------|------|------|------|------|------|------|------|------|------|------|-----|

この表は、各投資信託委託会社がファンド毎に公開し投資信託協会に提出している運用管理費用(信託報酬)率のデータに基づいて集計し、一般に広く閲覧に供するものです。投資信託の運用管理費用(信託報酬)は、各ファンドの投資する地域や資産等によって異なり、また、運用方法等によっても異なります。

This table is calculated based on the data of trust remuneration published and submitted to JITA by each investment management company by each fund, and is laid open for the public. The trust remuneration may be varied depending on the jurisdictions or types of assets which the fund invest in, and it may be also varied depending on each fund's management policy.

# 14. 公募株式投信(追加型)における販売手数料の状況

## Fees and Expenses of Publicly Offered Stock Investment Trusts (Sales Charges)

2018年1月末(Table End of January 2018)

| 投資対象地域 Area                      | 投資対象資産 Assets                       | ファンド本数<br>Number of Funds |                           |                    | 純資産総額(億円)<br>Total Net Assets<br>(100 million yen) |               |               | 販売手数料(%(税抜))<br>Sales Charge (Excluding tax)<br>(%) |               |    |      |
|----------------------------------|-------------------------------------|---------------------------|---------------------------|--------------------|--|---------------|---------------|---|---------------|----|------|
|                                  |                                     | うちノーロード<br>No-load        | ノーロード割合<br>No-load<br>(%) | うちノーロード<br>No-load | ノーロード割合<br>No-load<br>(%)                          | 平均<br>Average | 最大<br>Maximum |   | 最小<br>Minimum |    |      |
|                                  |                                     |                           |                           |                    |  |               | 本数<br>Number  |   |               |    |      |
| 国内 Domestic                      | 株式 Stock                            | 719                       | 60                        | 8.34               | 75,896   | 5,617         | 7.40          | 2.27  | 4.00          | 3  | 0.00 |
|                                  | 債券 Bond                             | 73                        | 27                        | 36.99              | 8,163  | 1,415         | 17.33         | 0.51  | 3.00          | 1  | 0.00 |
|                                  | 不動産投信 Real Estate Investment Trusts | 88                        | 11                        | 12.50              | 25,384   | 257           | 1.01          | 1.97  | 3.00          | 36 | 0.00 |
|                                  | その他資産 Other Assets                  | 3                         | 0                         | 0.00               | 139  | 0             | 0.00          | 2.27  | 3.00          | 2  | 0.00 |
|                                  | 資産複合 Asset Mix                      | 39                        | 7                         | 17.95              | 5,398  | 45            | 0.83          | 1.72  | 3.00          | 19 | 0.00 |
|                                  |                                     | 922                       | 105                       | 11.39              | 114,978  | 7,334         | 6.38          | 2.08  | 4.00          | 3  | 0.00 |
| 海外 Foreign                       | 株式 Stock                            | 720                       | 76                        | 10.56              | 62,582   | 3,248         | 5.19          | 2.48  | 4.00          | 6  | 0.00 |
|                                  | 債券 Bond                             | 1,013                     | 47                        | 4.64               | 103,152  | 869           | 0.84          | 2.40  | 5.00          | 2  | 0.00 |
|                                  | 不動産投信 Real Estate Investment Trusts | 178                       | 17                        | 9.55               | 42,797   | 270           | 0.63          | 2.42  | 3.50          | 30 | 0.00 |
|                                  | その他資産 Other Assets                  | 123                       | 5                         | 4.07               | 5,611  | 95            | 1.69          | 2.45  | 4.00          | 3  | 0.00 |
|                                  | 資産複合 Asset Mix                      | 181                       | 2                         | 1.10               | 17,926   | 55            | 0.31          | 2.70  | 4.00          | 1  | 0.00 |
|                                  |                                     | 2,215                     | 147                       | 6.64               | 232,068  | 4,537         | 1.96          | 2.46  | 5.00          | 2  | 0.00 |
| 内外 InterNational                 | 株式 Stock                            | 316                       | 24                        | 7.59               | 81,528   | 2,048         | 2.51          | 2.67  | 4.00          | 4  | 0.00 |
|                                  | 債券 Bond                             | 280                       | 20                        | 7.14               | 31,321   | 1,343         | 4.29          | 2.17  | 3.50          | 19 | 0.00 |
|                                  | 不動産投信 Real Estate Investment Trusts | 71                        | 1                         | 1.41               | 15,503   | 30            | 0.19          | 2.86  | 4.00          | 4  | 0.00 |
|                                  | その他資産 Other Assets                  | 82                        | 0                         | 0.00               | 4,822  | 0             | 0.00          | 2.41  | 3.50          | 1  | 0.00 |
|                                  | 資産複合 Asset Mix                      | 642                       | 99                        | 15.42              | 61,622   | 10,732        | 17.42         | 1.78  | 4.00          | 14 | 0.00 |
|                                  |                                     | 1,391                     | 144                       | 10.35              | 194,797  | 14,154        | 7.27          | 2.15  | 4.00          | 22 | 0.00 |
| 追加株式投信合計 Stock Investment Trusts |                                     | 4,528                     | 396                       | 8.75               | 541,843  | 26,025        | 4.80          | 2.29  | 5.00          | 2  | 0.00 |

\*DC向けファンド、ラップ、マネープール、財形、ミリオンを除外 Excluded funds for DC, investment trusts for wrap account, money pool funds and employee's asset-building schemes.

|                               |       |     |       |         |        |       |      |      |    |      |
|-------------------------------|-------|-----|-------|---------|--------|-------|------|------|----|------|
| インデックス型 Index Funds           | 422   | 201 | 47.63 | 37,285  | 9,664  | 25.92 | 0.68 | 3.00 | 30 | 0.00 |
| アクティブ型 Actively Managed Funds | 4,106 | 195 | 4.75  | 504,558 | 16,361 | 3.24  | 2.45 | 5.00 | 2  | 0.00 |

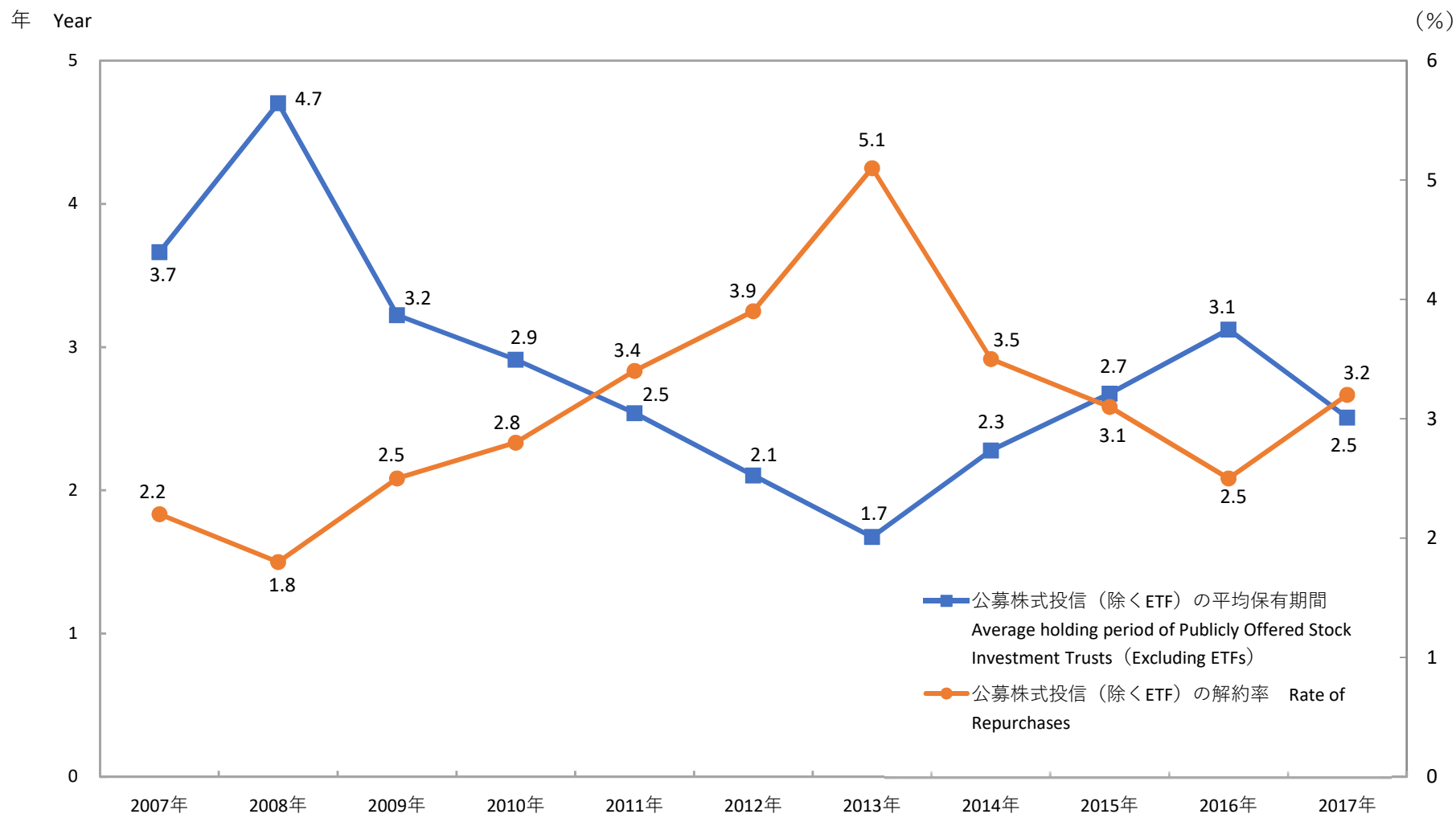
|                      |       |     |       |         |        |      |      |      |    |      |
|----------------------|-------|-----|-------|---------|--------|------|------|------|----|------|
| 毎月決算型 Monthly Payout | 1,430 | 12  | 0.84  | 281,352 | 348    | 0.12 | 2.65 | 5.00 | 2  | 0.00 |
| 毎月決算型以外 Other        | 3,098 | 384 | 12.40 | 260,491 | 25,677 | 9.86 | 2.12 | 4.00 | 19 | 0.00 |

この表は、各投資信託委託会社が投資信託協会に提出しているファンド毎の販売手数料データに基づいて集計し、一般に広く閲覧に供するものです。実際の販売手数料については、同じファンドでも販売会社によって異なる場合があります。

This table is calculated based on the data of sales charge submitted to JITA by each investment management company by each fund, and is laid open for the public. The sales charge may differ depending on each distributing company even in the same fund.



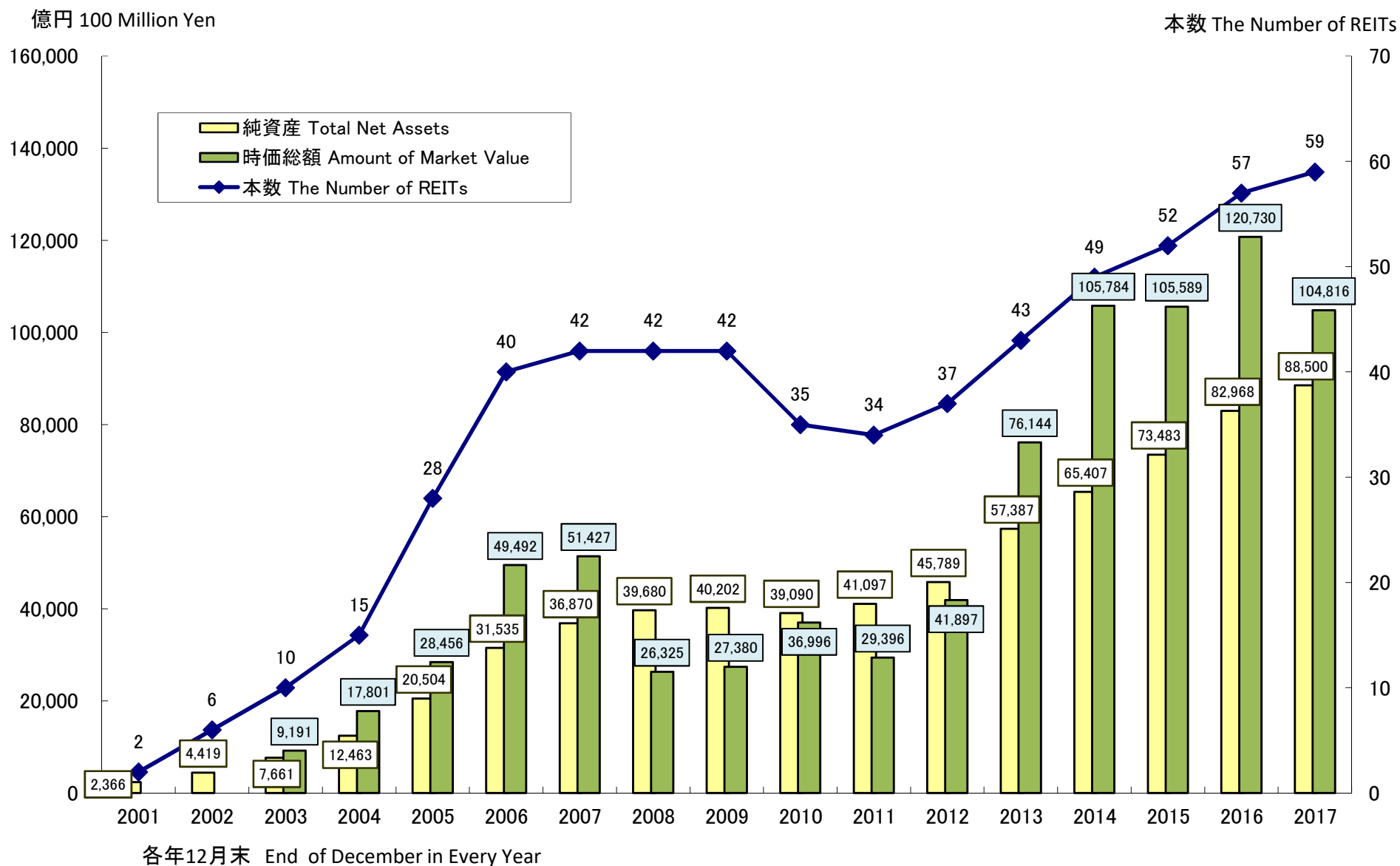
## 15. 公募株式投信(除くETF)の平均保有期間の推移 Average holding period of Publicly Offered Stock Investment Trusts (Excluding ETFs)



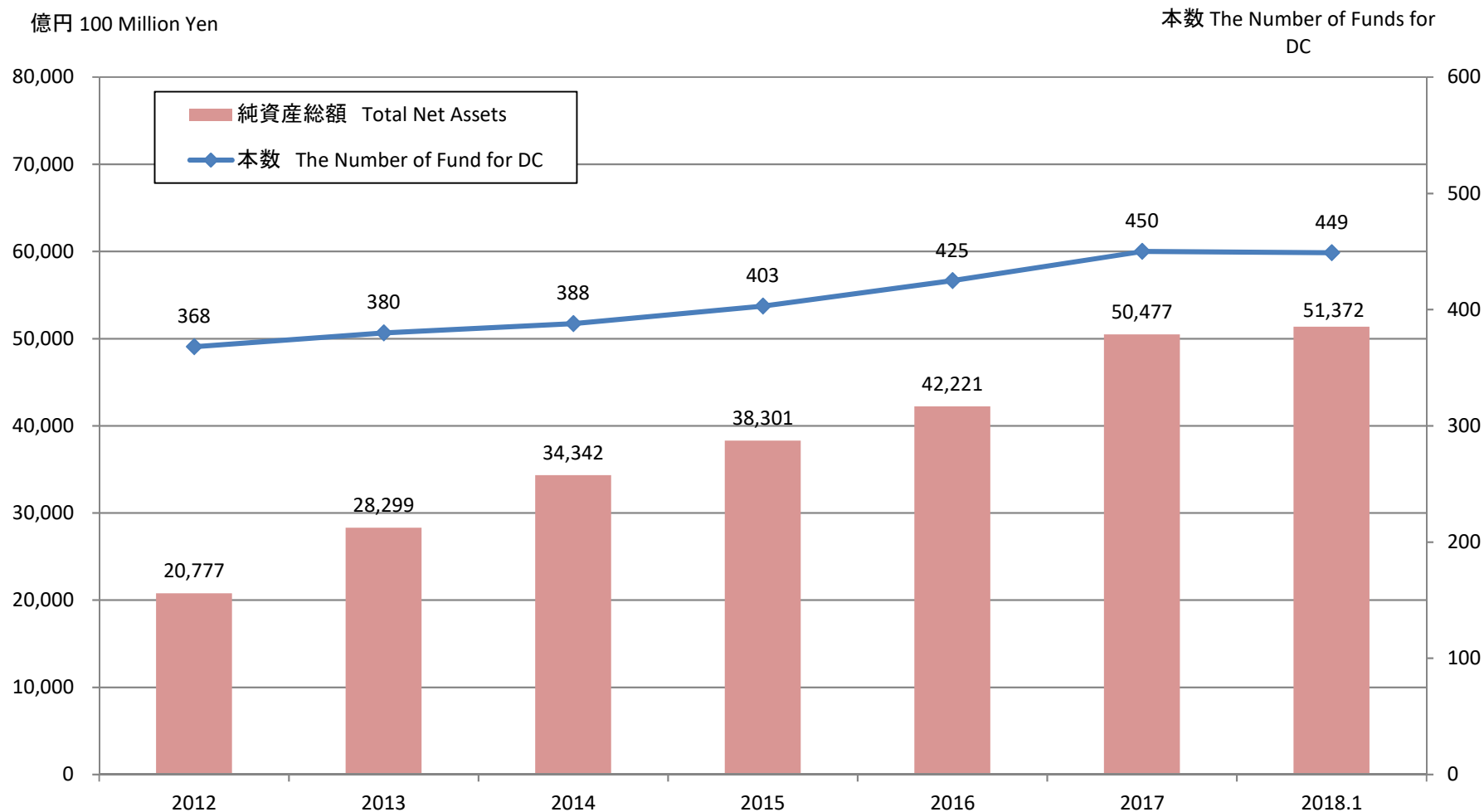
平均保有期間 = 年間純資産平均 (月末純資産の平均) ÷ 年間解約・償還額

Average holding period = The average of total net assets ÷ Total amount of cancellation and redemption amount

# 16. 上場REITの純資産総額 Total Net Assets of Listed REITs



## 17. 確定拠出年金(DC)向けファンドの市場規模(推計) Total Net Assets of Investment Trusts For Defined Contribution Pension Plan

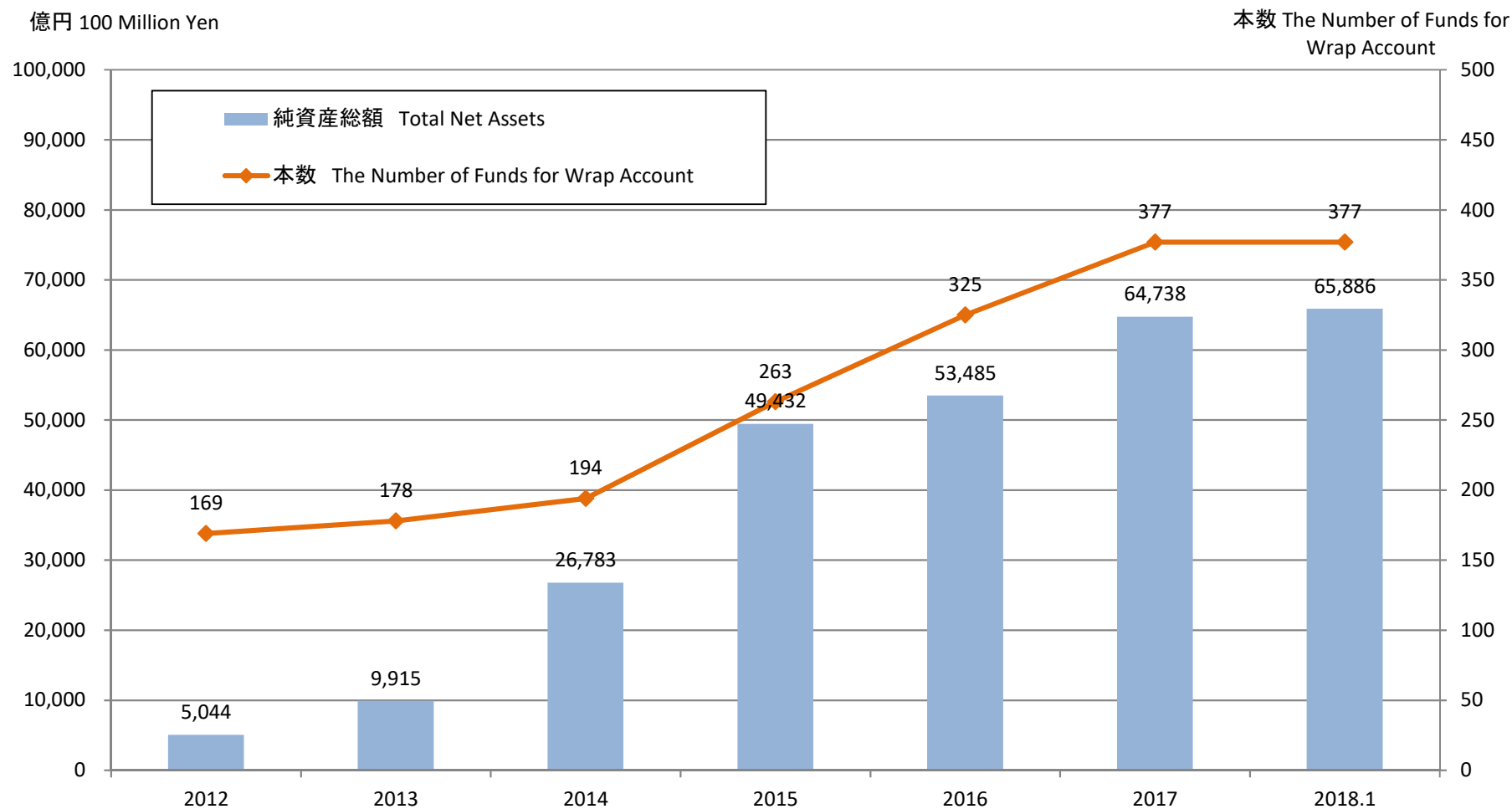


2018年以外 各年12月末 End of December in Every Year, Except for 2018

※データは推計ベースであり、その正確性を保証するものではなく、今後変更されることがあります。

The figures are based on estimated data, therefore, we don't ensure those accuracy. And the figures are subject to change in the future.

## 18.ラップ向けファンドの市場規模(推計) Total Net Assets of Investment Trusts For Wrap Account



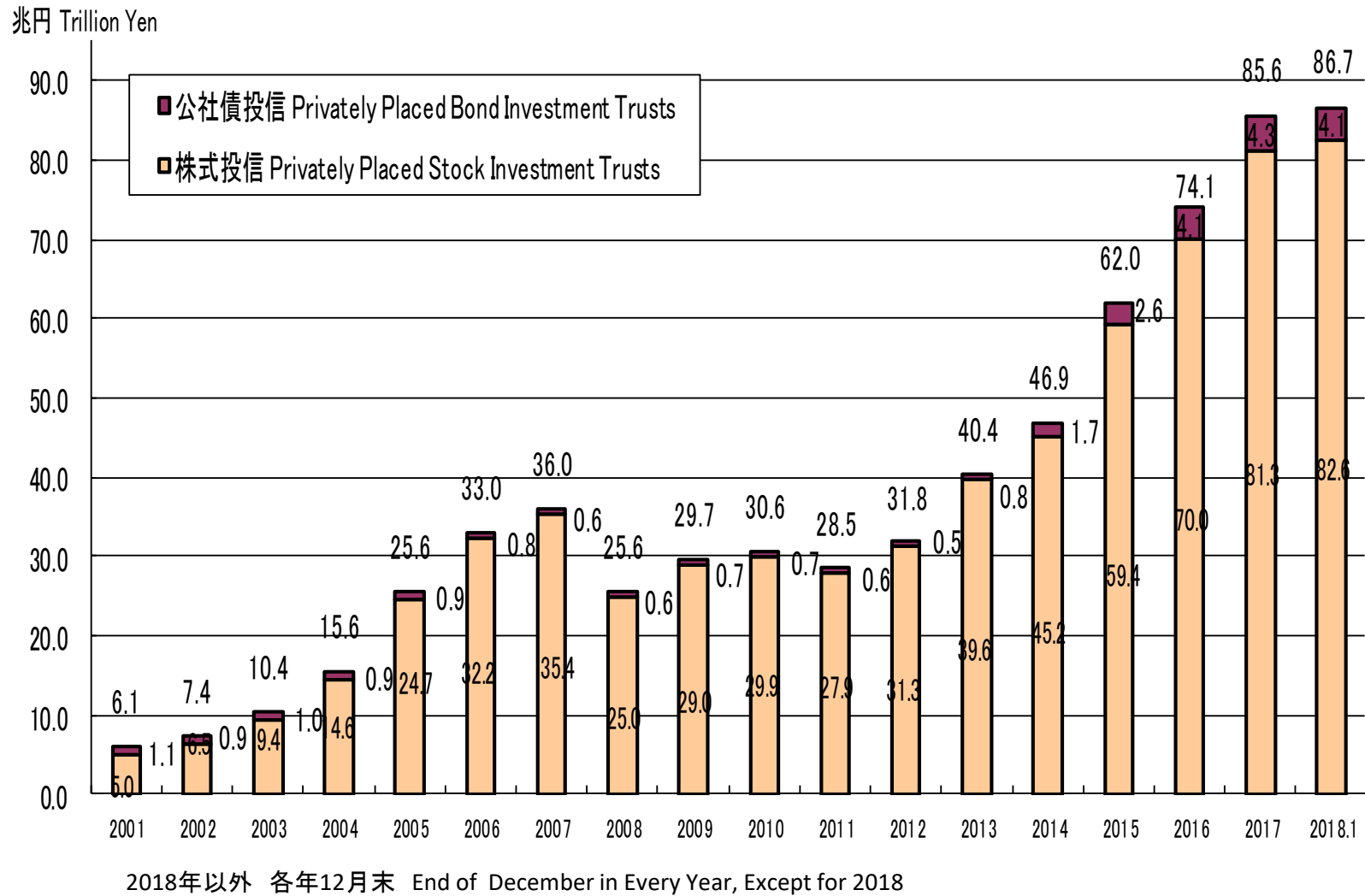
2018年以外 各年12月末 End of December in Every Year, Except for 2018

※データは推計ベースであり、その正確性を保証するものではなく、今後変更されることがあります。

The figures are based on estimated data, therefore, we don't ensure those accuracy. And the figures are subject to change in the future.

# 19. 契約型私募投信の純資産総額の推移

## Total Net Assets of Privately Placed Investment Trusts



## 20. 主要国における個人金融資産構成の比率

### Ratio of Individual Financial Assets Structure in the Major Countries

—2017年第3Qにおける、日本の個人金融資産に占める投資信託の比率は5.62%。

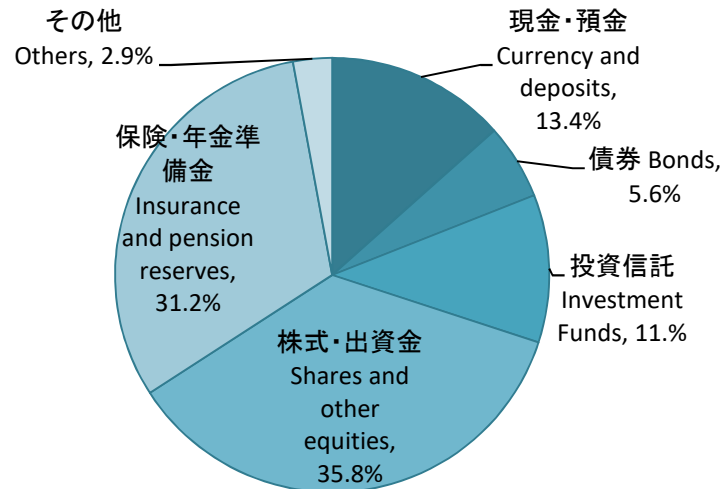
Percentage of investment trusts occupied in Japanese individual financial Assets are 5.62% in end of September 2017.

日本の個人金融資産に占める投資信託の比率 Percentage of investment trusts occupied in Japanese individual financial Assets

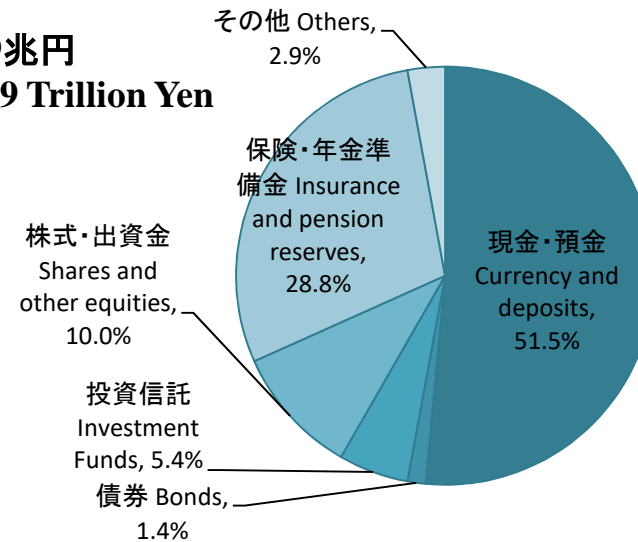
|         |       |         |        |
|---------|-------|---------|--------|
| 2012年4Q | 3.83% | 2015年4Q | 5.39%  |
| 2013年4Q | 4.65% | 2016年4Q | 5.33%  |
| 2014年4Q | 5.27% | 2017年3Q | 5.62%* |

\*速報値 Preliminary Figure

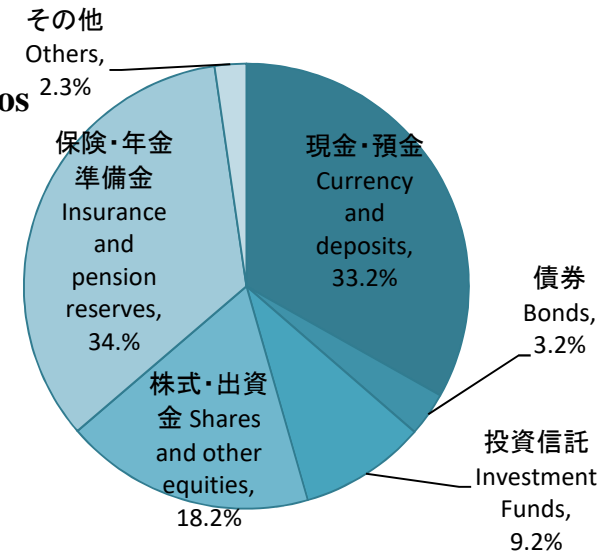
米国:77.1兆ドル  
USA:77.1 Trillion Dollars



日本:1,809兆円  
Japan:1,809 Trillion Yen



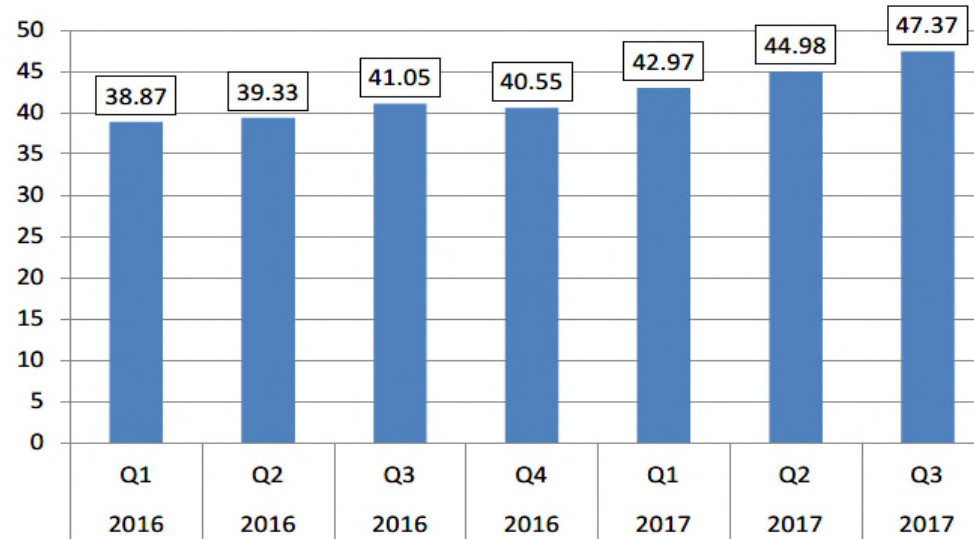
欧州:23.3兆ユーロ  
Europe:23.3 Trillion Euros



※日本銀行調べ 日・米・欧州:2017年3月末現在 According to a survey by Bank of Japan.  
Japan,USA,Europe: End of March 2017

## 21. 投資信託の世界統計 World Statistics of Investment Funds

世界の規制オープンエンド投資信託の残高(兆ドル、四半期末) Total Net Assets of Open-end Investment Funds in World (Trillion dollar/ End of Quarter)



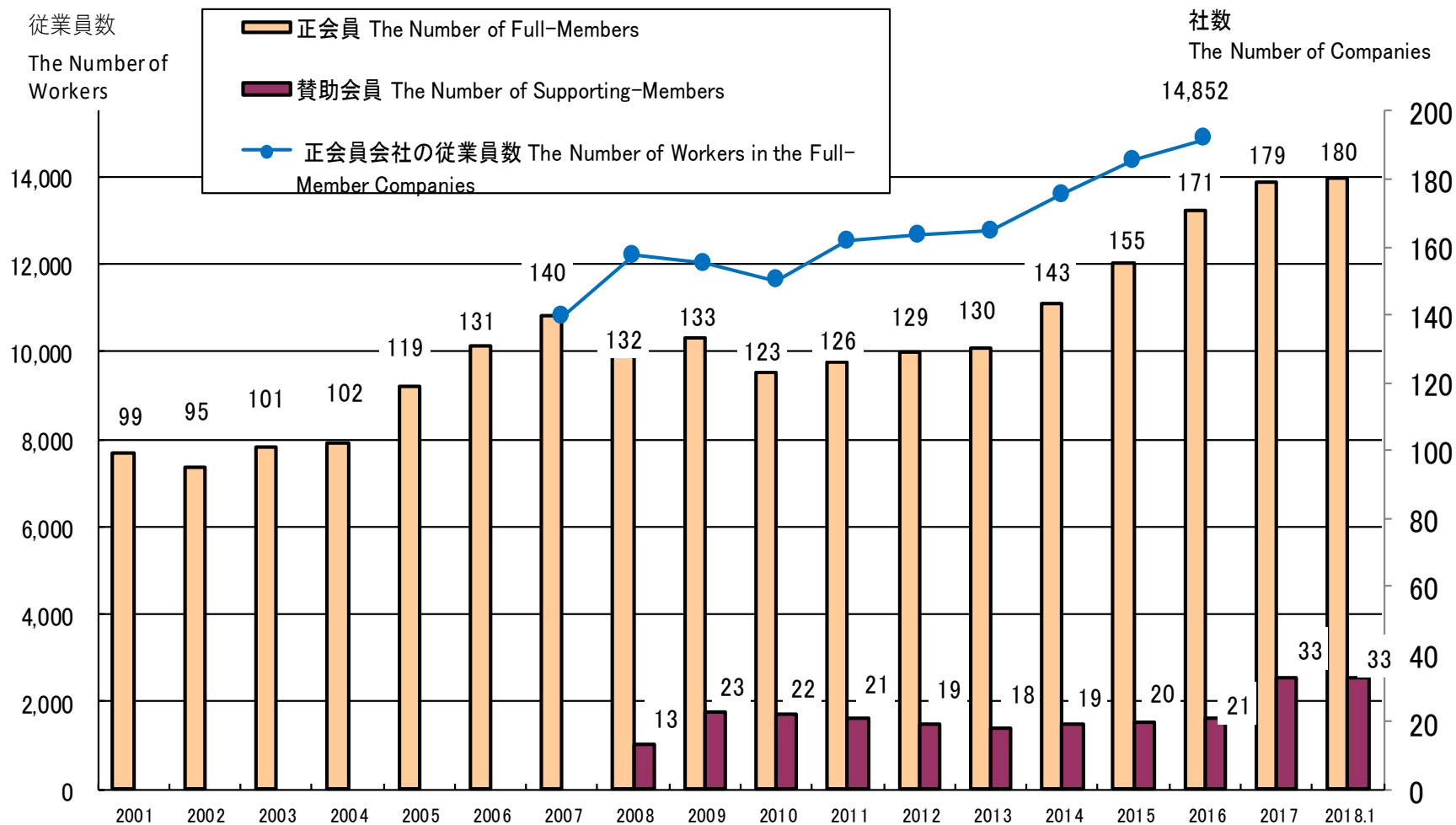
投信残高上位10カ国(2017年9月末) Top 10 Countries of Amount of Total Net Assets of Investment Funds (End of September 2017)

|   | 国名<br>Country         | 残高(10億ドル)<br>Total Net Assets<br>(Billion US Dollars) |    | 国名<br>Country        | 残高(10億ドル)<br>Total Net Assets<br>(Billion US Dollars) |
|---|-----------------------|---|----|----------------------|---|
| 1 | 米国 USA                | 21,231  | 6  | オーストラリア<br>Australia | 2,086   |
| 2 | ルクセンブルグ<br>Luxembourg | 4,766   | 7  | 英国 UK                | 1,820   |
| 3 | アイルランド<br>Ireland     | 2,712   | 8  | 日本<br>Japan          | 1,662   |
| 4 | フランス<br>France        | 2,280   | 9  | 中国<br>China          | 1,583   |
| 5 | ドイツ<br>Germany        | 2,255   | 10 | ブラジル<br>Brazil       | 1,266   |

2015年第1四半期より、IIFAはオープンエンド型投資信託の集計対象範囲を拡大、すなわち、上場投信、機関投資家向けファンド、元本保証/保全型ファンド等を追加している。From the 1Q 2015, IIFA has expanded the aggregate scope of statistics. In other words, IIFA added ETFs, institutional funds, guaranteed /protected funds in the statistics.

## 22. 協会会員数等の推移

### The Number of Member Companies of JITA



・正会員会社の従業員数は 2007年～2009年は11月20日時点、2010年～2011年は7月末時点、2012年以降は9月末時点

2018年以外 各年12月末 End of December in Every Year, Except for 2018